

PRODUCT INFORMATION PACKET

FASCO®

Model No: D127

Catalog No: D127

Fan and Blower Motor, 1/40 HP, 1 Ph, 60 Hz, 115 V, 1500 RPM, 1 Speed, 3.3" Diameter, OAO



Regal and Fasco are trademarks of Regal Rexnord Corporation or one of its affiliated companies.

©2022 Regal Rexnord Corporation, All Rights Reserved. MC017097E

RegalRexnord



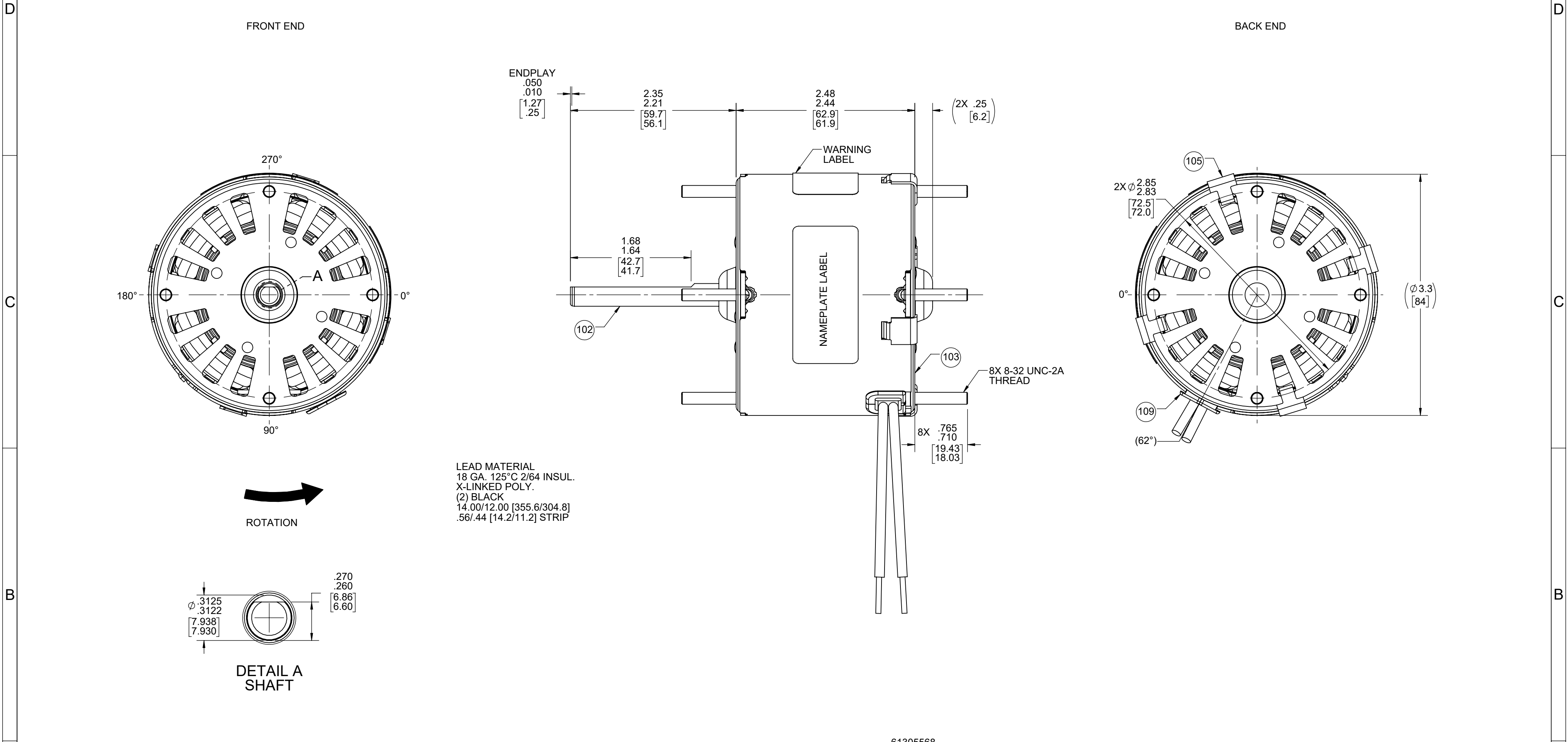
Nameplate Specifications

Output HP	1/40 Hp	Output KW	0.02 kW
Frequency	60 Hz	Voltage	115 V
Current	1.00 A	Speed	1500 rpm
Phase	1	Duty	Air Over
Insulation Class	B	Frame	3.3
Enclosure	Open Air Over	Thermal Protection	Thermally Protected
Ambient Temperature	40 °C	UL	Recognized
CSA	Y	CE	N
Number of Speeds	1		

Technical Specifications

Electrical Type	Shaded Pole	Starting Method	Across The Line
Poles	4	Rotation	Counterclockwise Shaft End
Mounting	Extended Studs	Drive End Bearing	Sleeve
Opp Drive End Bearing	Sleeve	Frame Material	Steel
Shaft Type	Flat	Overall Length	5.08 in
Frame Length	2.24 in	Shaft Diameter	0.313 in
Shaft Extension	2.30 in		
Outline Drawing	71631484	Connection Drawing	NA

This is an uncontrolled document once printed or downloaded and is subject to change without notice. Date Created:11/29/2022



NOTES:
1. NO PACKAGING TAPE OVER CARTON LABEL.

A

CUSTOMER:		FASCO DIST.		APPLICATION:		COUNTER SALES					
CUSTOMER PN:		D127		MOTOR WEIGHT:		2.53 LBS.					
<div> <div>HORIZONTAL</div> </div>		UP		ENVIRONMENT:		DRY					
		MOTOR TYPE						REFERENCE SAMPLE			
SHADED POLE											
		B	LA	FR	A	S	C	E	B	A	
		00	63	30	V	03	AC	5	3	0	
TYPICAL PERFORMANCE AT 115 VOLTS 60 HZ											
		IDLE			LOADED			LOCKED			BREAK
MOTOR SPEED	RPM	AMP	WATT	IN OZ	RPM	AMP	WATT	IN OZ	AMP	WATT	IN OZ
	1750	1.09	61	20.1	1590	1.21	88	6.8	1.73	126	22.0

SAFETY WARNING
This motor must be grounded in accordance with local or national electrical codes to prevent possible injury due to electrical shock

AVERTISSEMENT DE SÉCURITÉ
Ce moteur doit être fondée sur conformément à la réglementation locale ou national électrique codes pour prévenir d'éventuelles blessures en raison de choc électrique

FASCO™



Assembled In Mexico

No. 71631484 TYPE U63B1 T.P. AO LR6319

115 V 60 HZ Class B

1.0 A 1500 RPM 1/40 HP

Model D127 Max Amb: 40°C

DRAWING REVISION AC		REVISION BY MLS	REV DATE/DATE 7/20/2022	TOLERANCES (EXCEPT AS NOTED): DEC. INCH mm ANGLE .X ±0.1 [-±3] ±1° .XX ±0.01 [-±0.3] XXX ±0.005 [-±0.13] XXXX ±0.0005 [-±0.013]		DRAWN BY MLS		<div></div> <div>Regal Beloit America, Inc.</div>	
REQUEST NUMBER ECR-0219576		APPROVED BY KKM	DATE 7/20/2022	XXXX ±0.0005 [-±0.013] REMOVE BURRS & BREAK SHARP EDGES: .003/.015 [.08/.38] X 45° CORNER FILLETS: R.02 [.5] MACHINED SURFACES: .125/ mm 3.2/ INCH mm		DATE 4/2/2020			
REQUEST NUMBER DESCRIPTION UPDATED FASCO LOGO ON NAMEPLATE LABEL				DESCRIPTION OUTLINE MOTOR ASSY				MATERIAL PROCESS/FINISH BLACK	
COPYRIGHT (PER REVISION DATE) REGAL BELOIT AMERICA, INC. ALL RIGHTS RESERVED. PROPRIETARY AND CONFIDENTIAL INFORMATION - THIS DOCUMENT IS THE PROPERTY OF REGAL BELOIT AMERICA, INC. (OWNER) AND CONTAINS OWNER'S PROPRIETARY INFORMATION. ANY PERSON, CORPORATION OR OTHER FIRM RECEIVING IT IS DEEMED, BY RECEIVING IT, TO AGREE THAT IT, AND/OR ANY PART OF IT, SHALL NOT BE DISCLOSED TO ANY PERSON, CORPORATION OR OTHER ENTITY, DUPLICATED, AND/OR USED, EXCEPT AS EXPRESSLY APPROVED IN WRITING IN ADVANCE BY OWNER. THIS DOCUMENT SHALL BE RETURNED TO OWNER UPON REQUEST. IT MAY BE SUBJECT TO CERTAIN RESTRICTIONS UNDER APPLICABLE EXPORT CONTROL LAWS AND REGULATIONS.				THIRD ANGLE PROJECTION 				SIZE C DRAWING NUMBER 71631484	
				mm DIMENSIONS IN [BRACKETS] are FOR REFERENCE ONLY				SHEET 1 OF 2	

D

C

B

A

D

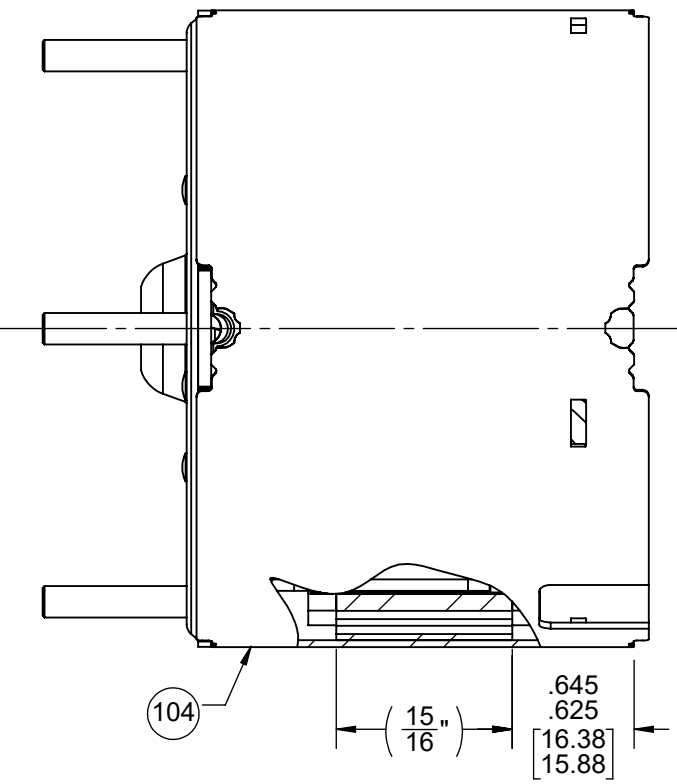
C

B

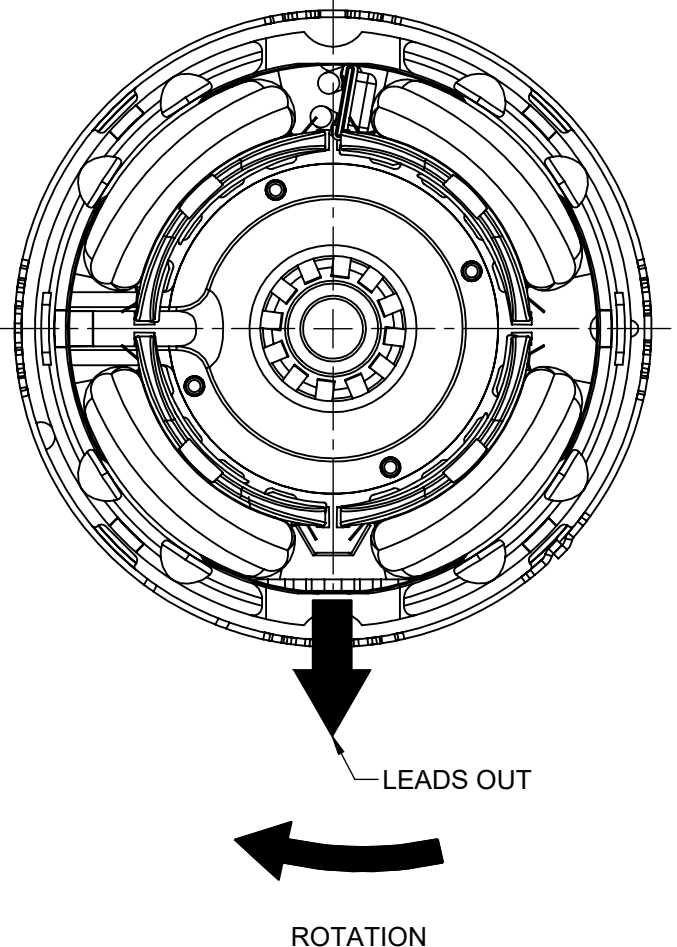
A

- NOTES:
1. STAKE STATOR TO MAIN FRAME PER 88830264.
 2. MAXIMUM TORQUE REQUIRED TO TURN MOTOR SHAFT IS 3/8 INCH-OUNCE.
 3. MAKE-UP WASHERS ARE TO BE ADDED OR DELETED TO ACHIEVE REQUIRED ENDPLAY.

FRONT END




BACK END



PACKING SPECIFICATIONS

1. PACK 1 PER CONTAINER, 45 CONTAINERS PER LAYER, 6 LAYERS PER PALLET, 270 MAX. PER PALLET, PER 88834200.
2. PLACE FOAM RING ON BACK END OF MOTOR AND FILLER TUBE OVER SHAFT. PLACE MOTOR IN CARTON. CLOSE FLAPS AND TAPE.
3. PLACE CARTON LABEL ON SHAFT EXTENSION END OF CARTON. CARTON LABELS MUST ALL FACE ONE DIRECTION TOWARD THE OPEN END OF THE PALLET. SEE 88834408.
4. PLACE ONE FLAT PAD ON PALLET. PLACE ONE FLAT PAD BETWEEN EACH LAYER AND ONE ON TOP.
5. PLACE ALL INSPECTION STICKERS AND WRITING ON TOP FLAT PAD.

DRAWING REVISION AC	REVISION BY MLS	REV DATE/© DATE 7/20/2022	TOLERANCES (EXCEPT AS NOTED): DEC. INCH mm ANGLE	DRAWN BY MLS	 Regal Beloit America, Inc.		
REQUEST NUMBER ECR-0219576	APPROVED BY KKM	DATE 7/20/2022	.X ±0.1 [±3] .XX ±0.01 [±0.3] .XXX ±0.005 [±0.13] .XXXX ±0.0005 [±0.013]	DATE 4/2/2020			
REQUEST NUMBER DESCRIPTION UPDATED FASCO LOGO ON NAMEPLATE LABEL			REMOVE BURRS & BREAK SHARP EDGES: .003/.015 [.08/.38] X 45° CORNER FILLETS: R.02 [.5] MACHINED SURFACES: .125/3.2 INCH/mm	APPROVED BY SDM	DESCRIPTION OUTLINE MOTOR ASSY		
COPYRIGHT (PER REVISION DATE) REGAL BELOIT AMERICA, INC. ALL RIGHTS RESERVED. PROPRIETARY AND CONFIDENTIAL INFORMATION - THIS DOCUMENT IS THE PROPERTY OF REGAL BELOIT AMERICA, INC. (OWNER) AND CONTAINS OWNER'S PROPRIETARY INFORMATION. ANY PERSON, CORPORATION OR OTHER FIRM RECEIVING IT IS DEEMED, BY RECEIVING IT, TO AGREE THAT IT, AND/OR ANY PART OF IT, SHALL NOT BE DISCLOSED TO ANY PERSON, CORPORATION OR OTHER ENTITY, DUPLICATED, AND/OR USED, EXCEPT AS EXPRESSLY APPROVED IN WRITING IN ADVANCE BY OWNER. THIS DOCUMENT SHALL BE RETURNED TO OWNER UPON REQUEST. IT MAY BE SUBJECT TO CERTAIN RESTRICTIONS UNDER APPLICABLE EXPORT CONTROL LAWS AND REGULATIONS.			mm DIMENSIONS IN [BRACKETS] ARE FOR REFERENCE ONLY	DATE 4/2/2020	MATERIAL PROCESS/FINISH BLACK		
THIRD ANGLE PROJECTION				REFERENCE	SIZE C		
					DRAWING NUMBER 71631484		
					SHEET 2 OF 2		